

Customer :

customer

Customer part :

customer part

Comment :

Comment

S1=6.33

S2=6.9

Tmax=446

Tp S2=485.0

PI=0.48

HI=128

Sample =1782.30

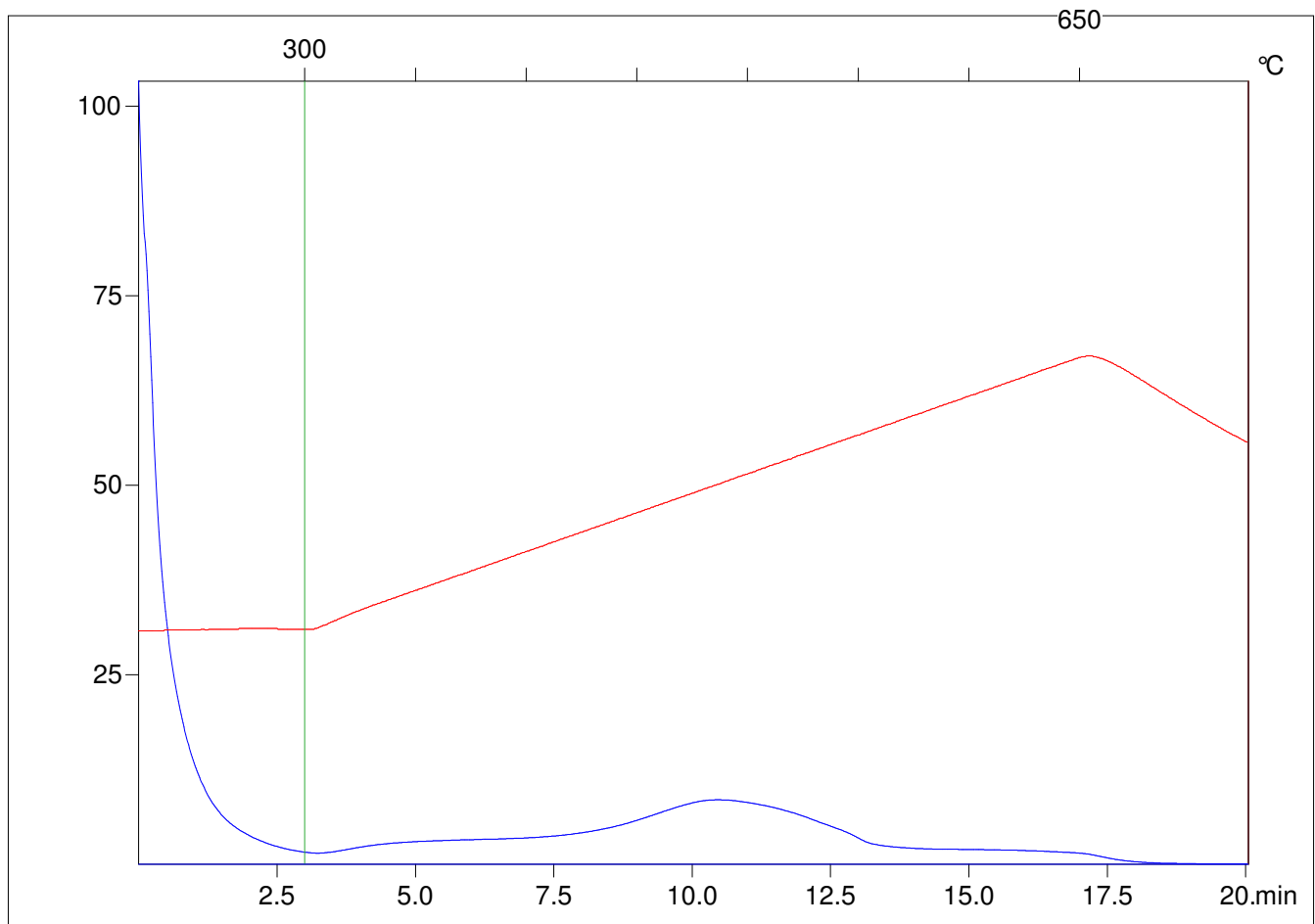
Method =Bulk Rock

Cycle=Basic

KFID(10\*9)=1444

Qty =70.3

TOC=5.4



C:\VINC\PK3\_1792\PK071.R00 : FID pyrolysis graphic

State

Pyro Status

Oxi Status